



**INSTRUCTIVE /
GEARED TROLLEY**



 CARRO PORTATECLE
DE ENGRANAJES
COD 289-100-020-000
MODELO TG1T
Nº 05260092000010
LOT-PROD B5
1t
UNE-EN 13157:2005+A1
NO EXCEDER LIMITE DE CARGA



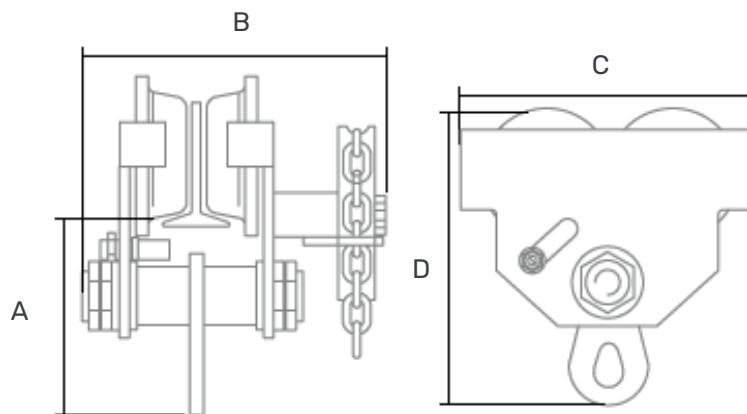
INSTALLATION INSTRUCTIONS

- Installation Procedure
- Measure the actual width of the beam.
- Install the necessary amount of spacer washers evenly inside the trolley cover, so that the dimension between the flanges of the trolley wheels is 6mm (1/4") at most larger than the width of the beam.
- Install the remaining washers on the outside of the trolley cover and place the nuts on the bolts. There should always be at least one washer inside and outside the beam.
- Loosen the bolts and separate the covers so that the wheels are released from the beam. Tighten the nuts firmly against the washers, then lift a slight weight to ensure that all four wheels of the trolley are resting on the beam. Screw the nuts firmly against the washers and then install the safety locks.

NUTS MUST BE TIGHTENED

When gear trolleys are installed with a minimum beam hook, securing bolts will be required to prevent the wheel from getting dirty.

Suspend the load on the trolley without exceeding its capacity, then slide the unit slowly along the entire beam to ensure safe operation.



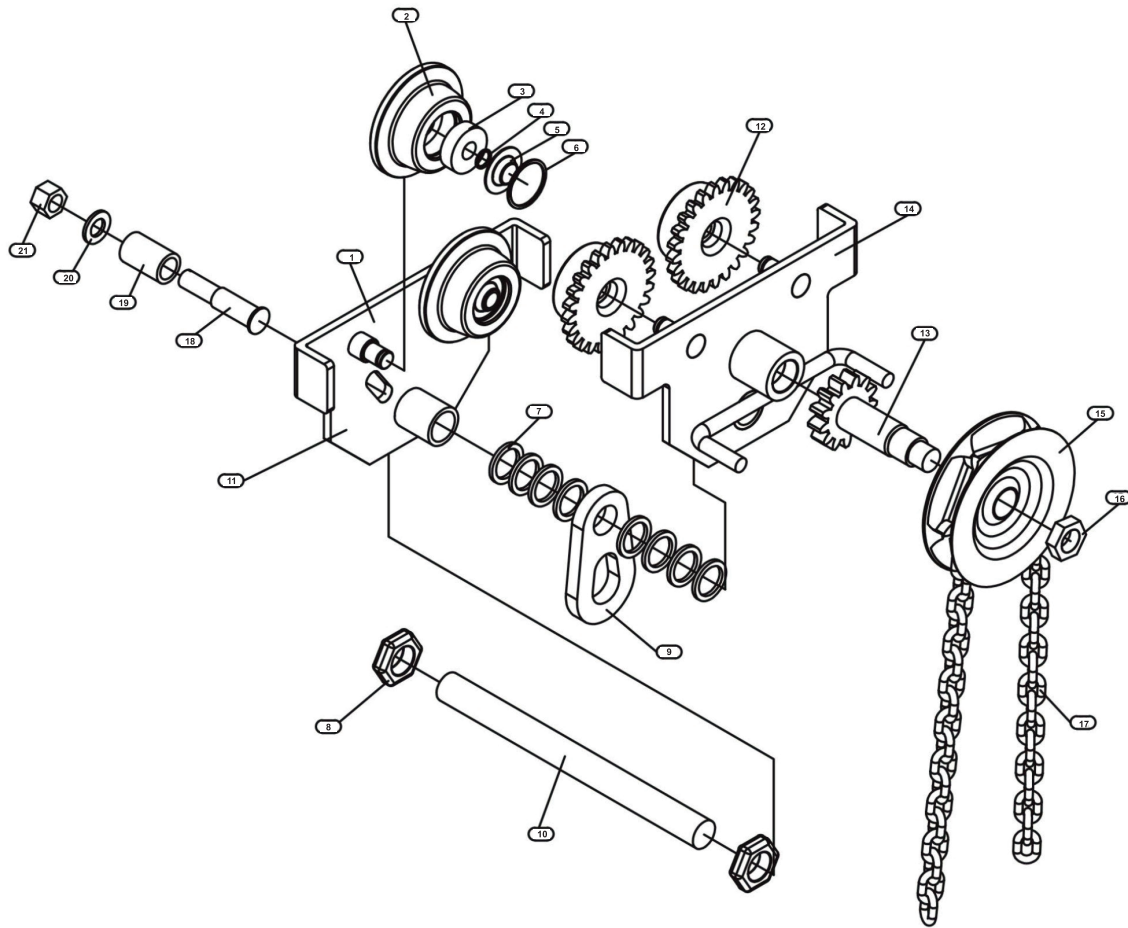
SPECIFICATIONS

Complies with or exceeds standard EN 13155 - ASME B30.11

WLL t.	Loss of height A (mm)	S Beam width mm	Dimensions* mm			KG
			B	C	D	
1	130	58 - 127	295	235	215	13
2	160	58 - 127	330	270	230	17,8
3	186	82 - 153	428,5	344	338	40
5	202	190 - 240	385	366	335	38,5
10	275,5	100 - 178	385	455	445	100
20	315	100 - 178	547	642	622	245

*Approximate dimensions and weights | Gorila Brand | Certified Product

PARTS AND COMPONENTS



- | | | |
|------------------------|----------------------------|-------------------------------|
| 1. Back plate | 9. Lifting ring | 17. Hoist trolley drive chain |
| 2. Wheel | 10. Adjustment bolt | 18. Roller |
| 3. Bearing | 11. Chain guide | 19. Roller sleeve |
| 4. Shaft ring | 12. Gear wheel | 20. Snap ring |
| 5. Bearing ring | 13. Chain wheel union gear | 21. Nut |
| 6. Wheel lock | 14. Front plate | |
| 7. Washer | 15. Chain wheel | |
| 8. Adjustment bolt nut | 16. Chain wheel nut | |

INSPECTION

- The inspection process for gear trolleys is based on ASME B30.16.

Pre-use inspection:

- Inspection of functional operating mechanisms to verify proper operation, proper fit on the beam, and absence of unusual or strange sounds.
- Inspection of connection points between the gear trolley and the hoist.
- Hooks; inspection of locks and lock components. Hook deformations. (In hoists)

MAINTENANCE

Lubrication:

- To prolong the life of the equipment, its components should be lubricated.
- For lubricating gears, lithium lubricating grease can be used.
- For environments with excessive dust, dry lubricant is acceptable.

Storage

- The equipment should be stored in a clean, dry place, free from moisture.
- For conditions where the Gorila® drag gear trolley is installed outdoors without use for extended periods of time, it is advisable to cover the equipment.

